

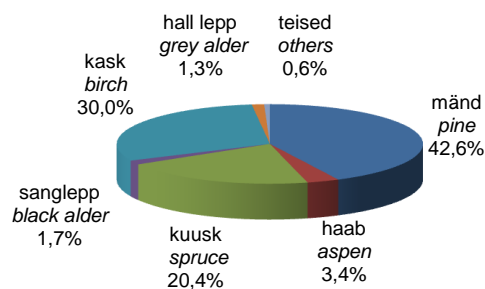
## 1.4.2 Metsamaa pindala jagunemine maakonniti valitseva puuliigi järgi

*Distribution of forest land area by dominant tree species in counties*

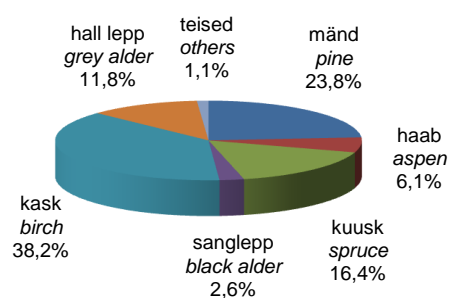
Maakond County	Omandi- vorm	Korraldatud metsa- maa pindala (ha) Area with mana- gement plans (ha)	valitsev puuliik <i>dominant tree species</i>									Ownership category
			mänd pine	kuusk spruce	tamm oak	saar ash	kask birch	haab aspen	sanglepp black alder	hall lepp grey alder	muud others	
			pindala (%)					area (%)				
Harju	riigimets	93 168	56.2	18.1	0.1	0.2	21.2	1.2	1.6	1.4	0.1	state forest
	eramets	54 634	25.3	23.9	0.2	0.5	33.3	3.5	3.2	9.8	0.2	private forest
Hiiu	riigimets	23 916	64.5	7.4	0.1	0.0	25.6	0.4	2.0	0.0		state forest
	eramets	24 337	27.8	9.2	0.1	0.6	47.0	3.1	12.0	0.2	0.0	private forest
Ida-Viru	riigimets	110 094	46.8	14.3	0.0	0.2	32.5	3.0	2.0	1.0	0.2	state forest
	eramets	41 080	24.1	12.7	0.0	0.3	43.1	5.9	3.1	10.5	0.3	private forest
Jõgeva	riigimets	61 254	21.1	23.8	0.1	0.3	41.7	7.7	2.3	2.6	0.5	state forest
	eramets	46 300	10.1	16.4	0.0	0.2	46.3	6.5	1.8	18.4	0.2	private forest
Järva	riigimets	49 622	35.9	31.6	0.1	0.0	27.0	2.6	0.6	1.9	0.3	state forest
	eramets	42 219	16.3	23.1	0.0	0.1	37.2	6.0	1.0	16.2	0.2	private forest
Lääne	riigimets	30 232	45.9	11.3	0.4	0.6	32.5	4.0	2.2	2.9	0.2	state forest
	eramets	32 370	21.9	8.9	0.9	1.7	39.7	7.5	5.9	13.4	0.2	private forest
Lääne- Viru	riigimets	83 049	42.1	26.9	0.2	0.1	23.8	3.5	1.6	1.7	0.3	state forest
	eramets	59 050	15.8	27.4	0.2	0.1	31.9	6.3	2.3	15.7	0.4	private forest
Põlva	riigimets	47 197	58.4	20.1	0.1	0.0	17.1	3.3	0.5	0.3	0.2	state forest
	eramets	40 489	40.2	12.3	0.0	0.0	38.5	4.2	0.5	4.0	0.3	private forest
Pärnu	riigimets	131 504	36.8	18.8	0.2	0.2	39.5	2.1	1.4	0.9	0.1	state forest
	eramets	76 504	21.5	11.0	0.2	0.8	42.2	6.4	4.5	13.2	0.1	private forest
Rapla	riigimets	54 251	39.7	23.9	0.2	0.0	31.0	2.7	0.9	1.5	0.2	state forest
	eramets	62 647	22.0	21.5	0.4	0.2	38.4	5.0	1.8	10.6	0.1	private forest
Saare	riigimets	24 439	68.2	6.9	2.5	0.5	16.8	3.9	0.7	0.3	0.3	state forest
	eramets	67 606	54.0	5.5	3.7	1.5	21.3	11.1	2.0	0.9	0.1	private forest
Tartu	riigimets	65 346	23.9	17.2	0.1	0.3	45.6	6.5	4.8	1.1	0.5	state forest
	eramets	31 887	14.0	15.9	0.1	0.4	47.4	7.3	2.7	11.7	0.6	private forest
Valga	riigimets	50 754	49.9	22.6	0.1	0.2	21.1	3.4	0.9	1.5	0.3	state forest
	eramets	43 132	20.4	19.3	0.1	0.3	40.1	5.4	0.8	13.2	0.3	private forest
Viljandi	riigimets	60 023	32.4	26.4	0.1	0.4	32.0	4.6	2.5	1.4	0.2	state forest
	eramets	76 990	12.2	15.1	0.1	0.8	43.2	5.8	1.7	21.0	0.3	private forest
Võru	riigimets	46 148	50.9	25.5	0.1	0.0	18.8	3.5	0.4	0.7	0.2	state forest
	eramets	48 614	28.1	20.8	0.0	0.0	35.6	5.3	0.3	9.5	0.3	private forest
Kokku	riigimets	930 994	42.6	20.4	0.2	0.2	30.0	3.4	1.7	1.3	0.2	state forest
<i>Total</i>	eramets	747 861	23.8	16.4	0.5	0.5	38.2	6.1	2.6	11.8	0.2	private forest

Allikas: Keskkonnaagentuur, metsaregister

Source: Estonian Environment Agency, forest register



Joonis 1.4.2.1 Metsamaa pindala jagunemine riigimetsas  
Figure 1.4.2.1 Distribution of forest land area in state forest



Joonis 1.4.2.2 Metsamaa pindala jagunemine erametsas  
Figure 1.4.2.2 Distribution of forest land area in private forest

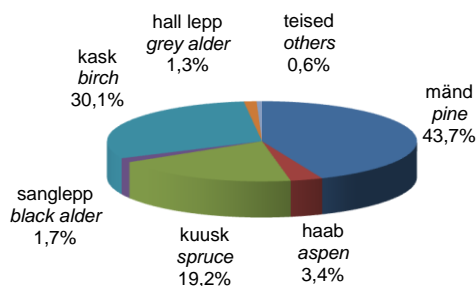
## 1.5.2 Puistute pindala jagunemine maakonniti valitseva puuliigi järgi

*Distribution of area of stands by dominant tree species in counties*

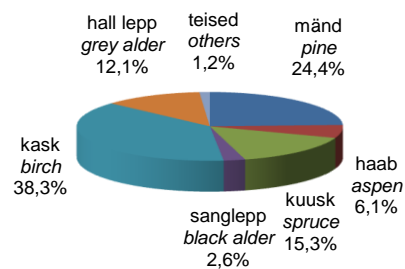
Maakond County	Omandi- vorm	Korraldatud metsa- maa pindala (ha) Area with mana- gement plans (ha)	valitsev puuliik <i>dominant tree species</i>									Ownership category
			mänd pine	kuusk spruce	tamm oak	saar ash	kask birch	haab aspen	sanglepp black alder	hall lepp grey alder	muud others	
			pindala (%)					area (%)				
Harju	riigimets	86 379	56.9	17.7	0.1	0.1	20.9	1.2	1.6	1.4	0.1	state forest
	eramets	51 890	25.6	23.4	0.2	0.5	33.3	3.5	3.3	10.0	0.2	private forest
Hiiu	riigimets	22 179	65.0	6.9	0.1	0.0	25.6	0.4	2.1	0.0		state forest
	eramets	22 579	28.3	9.2	0.1	0.6	46.5	3.2	11.9	0.2	0.0	private forest
Ida-Viru	riigimets	99 831	47.9	13.0	0.0	0.3	32.7	2.9	2.0	1.0	0.2	state forest
	eramets	38 280	24.8	11.6	0.0	0.3	43.2	5.9	3.1	10.9	0.3	private forest
Jõgeva	riigimets	55 678	22.2	23.0	0.1	0.3	41.7	7.6	2.4	2.6	0.2	state forest
	eramets	43 795	10.5	15.5	0.0	0.3	46.4	6.5	1.8	18.9	0.2	private forest
Järva	riigimets	45 588	37.7	30.0	0.0	0.0	27.0	2.5	0.7	1.9	0.2	state forest
	eramets	39 080	17.1	21.6	0.0	0.1	37.6	6.0	1.0	16.5	0.2	private forest
Lääne	riigimets	28 562	46.1	10.8	0.5	0.6	32.6	4.1	2.2	3.0	0.1	state forest
	eramets	30 746	22.1	8.6	0.9	1.7	39.3	7.6	5.8	13.8	0.2	private forest
Lääne- Viru	riigimets	76 078	43.6	24.8	0.1	0.1	24.2	3.5	1.6	1.7	0.2	state forest
	eramets	52 969	16.8	25.1	0.2	0.1	32.3	6.2	2.4	16.5	0.5	private forest
Põlva	riigimets	42 985	59.2	18.7	0.1	0.0	17.7	3.4	0.5	0.3	0.1	state forest
	eramets	37 816	40.7	11.3	0.0	0.0	38.9	4.1	0.5	4.1	0.3	private forest
Pärnu	riigimets	120 802	38.1	17.7	0.2	0.2	39.3	2.1	1.4	1.0	0.0	state forest
	eramets	72 964	21.8	10.2	0.2	0.8	42.3	6.5	4.7	13.5	0.1	private forest
Rapla	riigimets	49 861	40.8	22.9	0.2	0.0	30.9	2.7	1.0	1.5	0.1	state forest
	eramets	58 550	22.6	20.4	0.4	0.2	38.7	5.0	1.8	10.9	0.1	private forest
Saare	riigimets	22 932	68.6	6.3	2.7	0.5	16.7	4.0	0.7	0.3	0.1	state forest
	eramets	64 011	54.3	5.2	3.8	1.5	21.0	11.1	2.0	0.9	0.1	private forest
Tartu	riigimets	60 588	24.5	16.1	0.1	0.3	46.2	6.3	4.9	1.1	0.4	state forest
	eramets	29 603	14.5	14.3	0.1	0.4	48.0	7.3	2.9	12.0	0.6	private forest
Valga	riigimets	46 893	50.7	21.7	0.1	0.2	21.3	3.4	0.9	1.5	0.2	state forest
	eramets	39 671	21.2	17.6	0.1	0.3	40.5	5.4	0.8	13.8	0.3	private forest
Viljandi	riigimets	55 034	33.8	25.0	0.1	0.5	31.9	4.6	2.6	1.4	0.2	state forest
	eramets	71 501	12.7	13.4	0.1	0.7	43.7	5.9	1.7	21.6	0.3	private forest
Võru	riigimets	42 185	51.4	24.6	0.1	0.0	19.1	3.5	0.4	0.8	0.2	state forest
	eramets	45 709	28.9	19.7	0.0	0.0	35.7	5.3	0.3	9.7	0.3	private forest
Kokku	riigimets	855 577	43.7	19.2	0.2	0.2	30.1	3.4	1.7	1.3	0.2	state forest
<i>Total</i>	eramets	699 163	24.4	15.3	0.5	0.5	38.3	6.1	2.6	12.1	0.2	private forest

Allikas: Keskkonnaagentuur, metsaregister

Source: Estonian Environment Agency, forest register



Joonis 1.5.2.1 Puistute pindala jagunemine riigimetsas  
Figure 1.5.2.1 Distribution of area of stands in state forest



Joonis 1.5.2.2 Puistute pindala jagunemine erametsas  
Figure 1.5.2.2 Distribution of area of stands in private forest

## 1.6.2 Metsa tagavara jagunemine maakonniti valitseva puuliigi järgi

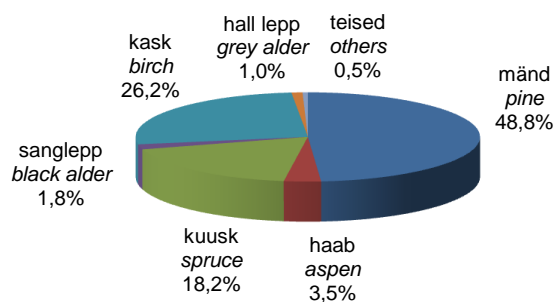
*Distribution of growing stock by dominant tree species in counties*

Maakond County	Omandi- vorm	Korraldatud metsa tagavara Growing stock* by management plans (1000 m <sup>3</sup> )	valitsev puuliik <i>dominant tree species</i>									Ownership category
			mänd <i>pine</i>	kuusk <i>spruce</i>	tamm <i>oak</i>	saar <i>ash</i>	kask <i>birch</i>	haab <i>aspen</i>	sanglepp <i>black alder</i>	hall lepp <i>grey alder</i>	muud <i>others</i>	
Harju	riigimets	14 646	59.4	18.9	0.1	0.1	17.0	1.3	1.9	1.2	0.1	state forest
	eramets	8 440	29.6	27.6	0.2	0.4	27.0	3.4	3.8	7.8	0.2	private forest
Hiiumaa	riigimets	4 119	70.9	8.2	0.1	0.0	18.2	0.5	2.1	0.0	0.0	state forest
	eramets	3 482	34.2	12.5	0.1	0.6	38.1	3.5	10.9	0.2	0.0	private forest
Ida-Viru	riigimets	17 517	50.8	13.0	0.0	0.2	29.4	3.4	2.3	0.8	0.2	state forest
	eramets	6 142	31.2	14.9	0.0	0.2	36.7	5.7	3.2	7.9	0.2	private forest
Jõgeva	riigimets	10 153	25.3	21.8	0.1	0.4	39.7	8.0	2.6	2.1	0.1	state forest
	eramets	6 866	13.5	19.9	0.0	0.2	42.7	5.9	1.9	15.8	0.1	private forest
Järva	riigimets	7 063	40.0	32.3	0.0	0.0	22.5	2.8	0.6	1.6	0.2	state forest
	eramets	6 314	20.8	27.3	0.0	0.1	32.5	6.1	1.0	12.1	0.1	private forest
Lääne	riigimets	4 313	51.3	10.9	0.4	0.6	26.0	5.1	2.6	3.0	0.1	state forest
	eramets	4 646	26.3	9.8	0.8	1.5	35.1	8.6	5.5	12.2	0.2	private forest
Lääne-Viru	riigimets	14 745	51.4	23.7	0.1	0.1	18.3	3.3	1.7	1.3	0.2	state forest
	eramets	8 292	22.5	31.4	0.2	0.1	25.9	5.0	2.6	12.1	0.3	private forest
Põlva	riigimets	9 002	64.6	17.7	0.1	0.0	14.6	2.3	0.4	0.2	0.1	state forest
	eramets	6 900	49.4	13.6	0.0	0.0	30.2	2.9	0.5	3.2	0.1	private forest
Pärnu	riigimets	22 160	43.4	14.0	0.2	0.3	36.9	2.7	1.7	0.8	0.0	state forest
	eramets	11 192	29.1	11.2	0.2	0.7	36.1	6.2	5.1	11.4	0.1	private forest
Rapla	riigimets	8 320	45.4	22.0	0.2	0.0	26.9	3.0	1.3	1.2	0.1	state forest
	eramets	9 243	26.5	23.8	0.4	0.2	33.2	5.1	1.8	9.0	0.1	private forest
Saaremaa	riigimets	3 961	70.7	6.5	2.3	0.4	14.4	4.6	0.8	0.3	0.1	state forest
	eramets	10 119	58.4	6.3	2.9	1.3	16.9	11.2	2.1	0.9	0.2	private forest
Tartu	riigimets	10 634	31.0	17.1	0.1	0.4	40.9	4.9	4.6	0.8	0.3	state forest
	eramets	5 213	20.1	18.3	0.1	0.4	42.9	5.6	3.0	9.4	0.3	private forest
Valga	riigimets	9 848	58.1	18.8	0.1	0.2	17.7	3.0	0.9	1.0	0.2	state forest
	eramets	7 302	27.3	20.1	0.1	0.3	35.1	4.8	0.8	11.5	0.2	private forest
Viljandi	riigimets	9 826	39.5	19.7	0.2	0.5	31.1	5.2	2.6	1.0	0.2	state forest
	eramets	11 199	18.4	15.8	0.1	0.9	39.2	5.1	2.0	18.4	0.2	private forest
Võru	riigimets	8 727	57.4	23.4	0.1	0.0	15.0	3.1	0.3	0.6	0.2	state forest
	eramets	8 817	35.3	23.5	0.0	0.0	28.6	4.3	0.3	7.8	0.1	private forest
Kokku	riigimets	155 035	48.8	18.2	0.2	0.2	26.2	3.5	1.8	1.0	0.2	state forest
Total	eramets	114 167	29.9	18.5	0.4	0.5	32.6	5.6	2.7	9.7	0.2	private forest

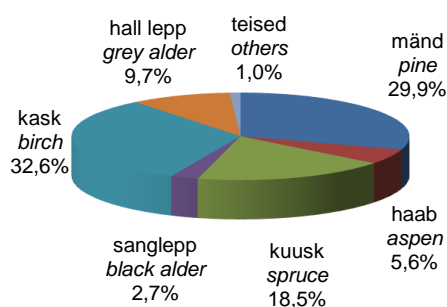
\* Data from standwise forest inventory

Allikas: Keskkonnaagentuur, metsaregister

Source: Estonian Environment Agency, forest register



Joonis 1.6.2.1 Metsa tagavara jagunemine riigimetsas  
Figure 1.6.2.1 Distribution of growing stock in state forest



Joonis 1.6.2.2 Metsa tagavara jagunemine erametsas  
Figure 1.6.2.2 Distribution of growing stock in private forest

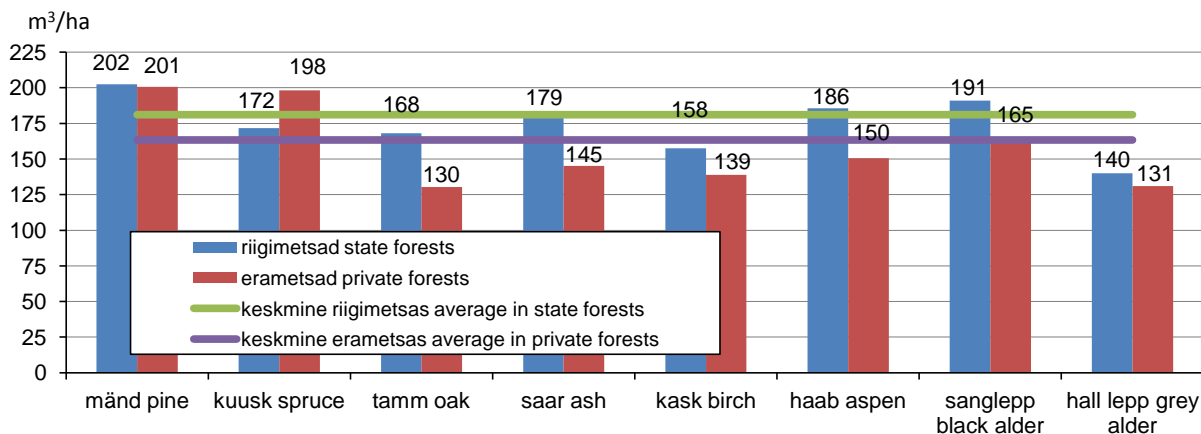
## 1.7.2 Puistute keskmine hektaritagavara maakonniti valitseva puuliigi järgi

Average volume per hectare of stands by dominant tree species in counties

Maakond County	Omandi- vorm	valitsev puuliik dominant tree species										Ownership category
		mänd pine	kuusk spruce	lehis larch	tamm oak	saar ash	kask birch	haab aspen	sanglepp black alder	hall lepp grey alder	Kokku Total	
		puistute hektaritagavara (m <sup>3</sup> /ha) average volume per hectare of stands (m <sup>3</sup> /ha)										
Harju	riigimets	177	181	235	158	153	138	188	199	141	170	state forest
	eramets	188	192	155	163	127	132	156	189	128	163	private forest
Hiiumaa	riigimets	203	223	134	156	208	132	222	188	174	186	state forest
	eramets	186	210	4	126	141	126	173	140	139	154	private forest
Ida-Virumaa	riigimets	186	175	219	187	160	158	205	202	130	175	state forest
	eramets	202	206	287	185	131	136	155	166	117	160	private forest
Jõgevamaa	riigimets	208	172	188	281	232	173	192	200	147	182	state forest
	eramets	202	201	134	187	153	144	143	168	131	157	private forest
Järvamaa	riigimets	164	167	189	144	120	129	172	154	127	155	state forest
	eramets	197	204	322	187	141	140	164	167	118	162	private forest
Lääne	riigimets	168	151	202	148	144	121	188	183	149	151	state forest
	eramets	180	174	192	134	133	135	172	145	133	151	private forest
Lääne-Virumaa	riigimets	228	185	271	193	141	146	184	203	141	194	state forest
	eramets	211	196	207	157	155	125	125	170	115	157	private forest
Põlvamaa	riigimets	229	199	250	186	124	172	142	168	142	209	state forest
	eramets	222	219	343	170	157	142	129	183	140	183	private forest
Pärnumaa	riigimets	209	145	206	175	200	172	239	213	152	183	state forest
	eramets	205	168	197	147	139	131	147	169	129	153	private forest
Rapla	riigimets	185	161	254	189	105	145	189	221	130	167	state forest
	eramets	186	184	225	159	129	135	160	159	130	158	private forest
Saaremaa	riigimets	178	178	455	147	138	149	195	194	140	173	state forest
	eramets	170	190	233	121	137	127	160	165	144	158	private forest
Tartumaa	riigimets	222	186	298	183	189	155	136	164	126	176	state forest
	eramets	243	225	298	178	181	158	133	184	138	176	private forest
Valgamaa	riigimets	241	182	285	208	189	174	187	219	142	210	state forest
	eramets	237	210	234	147	174	160	163	183	153	184	private forest
Viljandi	riigimets	209	141	298	267	202	174	201	177	133	179	state forest
	eramets	227	185	240	177	179	140	136	184	134	157	private forest
Võrumaa	riigimets	231	197	358	134	85	162	183	197	160	207	state forest
	eramets	236	231	141	197	163	154	157	185	154	193	private forest
Kokku	riigimets	202	172	260	168	179	158	186	191	140	181	state forest
	eramets	201	198	226	130	145	139	150	165	131	163	private forest

Allikas: Keskkonnaagentuur, metsaregister

Source: Estonian Environment Agency, forest register



Joonis 1.7.2.1 Puistute keskmine hektaritagavara

Figure 1.7.2.1 Average volume per hectare of stands

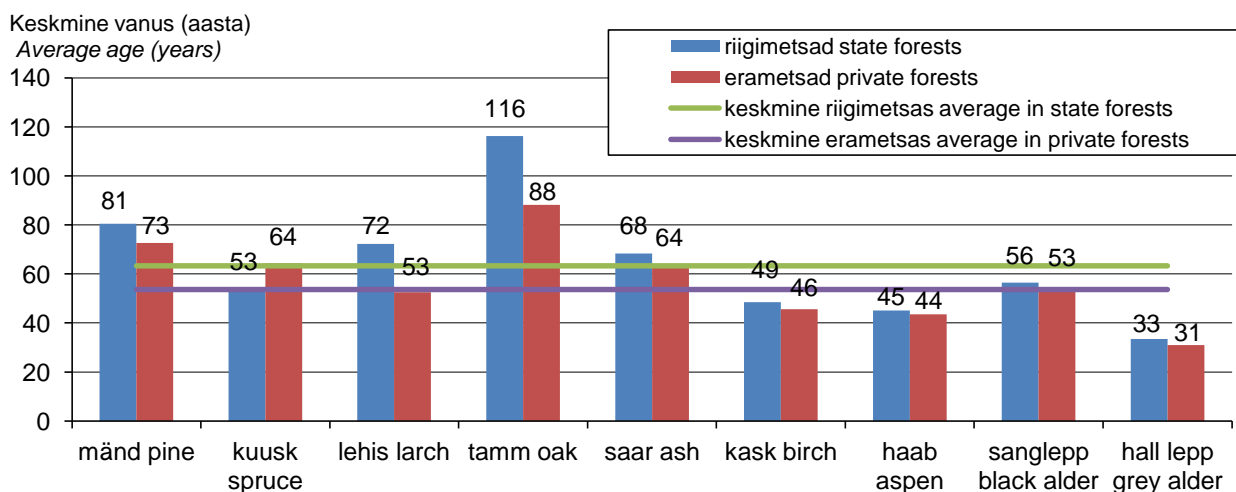
## 1.8.2 Puistute keskmine vanus maakonniti valitseva puuliigi järgi

*Average age of stands by dominant tree species in counties*

Maakond County	Omandi- vorm	valitsev puuliik dominant tree species										Kokku Total	Ownership category
		mänd pine	kuusk spruce	lehis larch	tamm oak	saar ash	kask birch	haab aspen	sanglepp black alder	hall lepp grey alder			
		puistute keskmine vanus (a) average age of stands (year)											
Harju	riigimets	82	66	75	96	75	51	53	65	36	71	state forest	
	eramets	76	71	38	95	58	51	48	59	33	60	private forest	
Hiiumaa	riigimets	93	106	110	99	92	51	73	72	42	83	state forest	
	eramets	71	83	6	98	67	54	62	53	35	62	private forest	
Ida-Viru	riigimets	76	55	49	130	61	48	49	63	33	63	state forest	
	eramets	75	67	68	109	51	44	42	54	31	53	private forest	
Jõgeva	riigimets	86	49	54	101	76	49	42	56	32	57	state forest	
	eramets	74	61	40	127	53	46	37	53	30	47	private forest	
Järva	riigimets	81	55	53	66	39	48	45	48	29	62	state forest	
	eramets	78	66	117	76	62	49	45	54	29	54	private forest	
Lääne	riigimets	77	56	59	92	67	50	61	58	38	64	state forest	
	eramets	71	69	49	95	58	53	59	48	34	57	private forest	
Lääne-Viru	riigimets	89	58	59	168	52	45	46	59	33	67	state forest	
	eramets	75	67	48	91	57	45	36	53	28	52	private forest	
Põlva	riigimets	74	46	78	47	46	43	32	44	33	62	state forest	
	eramets	72	60	97	77	62	36	30	54	32	53	private forest	
Pärnu	riigimets	80	46	43	176	84	48	57	57	37	61	state forest	
	eramets	72	54	59	98	61	44	42	50	31	50	private forest	
Rapla	riigimets	82	54	112	97	41	48	49	58	34	64	state forest	
	eramets	78	67	30	97	59	48	47	50	31	57	private forest	
Saaremaa	riigimets	74	69	107	119	77	57	62	59	37	71	state forest	
	eramets	67	75	53	86	70	54	59	55	36	64	private forest	
Tartu	riigimets	81	49	70	63	59	49	31	46	27	55	state forest	
	eramets	72	57	48	63	62	43	30	50	30	47	private forest	
Valga	riigimets	77	49	83	76	67	48	42	55	32	62	state forest	
	eramets	72	60	52	79	63	43	38	52	33	51	private forest	
Viljandi	riigimets	83	42	90	105	64	49	46	54	32	59	state forest	
	eramets	78	57	70	101	71	42	34	55	31	46	private forest	
Võru	riigimets	77	52	115	54	58	46	40	57	37	63	state forest	
	eramets	75	63	39	76	65	41	36	54	34	54	private forest	
Kokku	riigimets	81	53	72	116	68	49	45	56	33	63	state forest	
Total	eramets	73	64	53	88	64	46	44	53	31	54	private forest	

Allikas: Keskkonnaagentuur, metsaregister

Source: Estonian Environment Agency, forest register



Joonis 1.8.1.2 Puistute keskmine vanus

Figure 1.8.1.2 Average age of stands

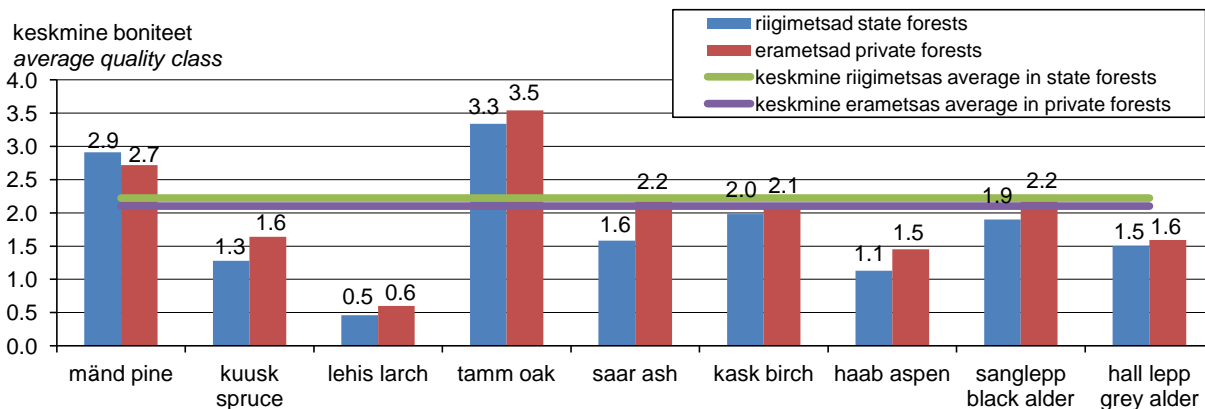
## 1.9 Puistute keskmine boniteet maakonniti valitseva puuliigi järgi

Average quality class of stands by dominant tree species in counties

Maakond County	Omandi- vorm	valitsev puuliik dominant tree species										Omandus- category
		mänd pine	kuusk spruce	lehis larch	tamm oak	saar ash	kask birch	haab aspen	sanglepp black alder	hall lepp grey alder	Kokku Total	
		puistute keskmine boniteet					average quality class of stands					
Harju	riigimets	3.4	1.9	1.3	3.3	2.1	2.5	1.6	2.2	1.7	2.9	state forest
	eramets	3.1	2.1	1.0	3.1	2.4	2.7	1.6	2.4	1.9	2.5	private forest
Hiiu	riigimets	3.6	2.9	2.4	3.3	2.4	2.8	2.1	2.9	2.2	3.3	state forest
	eramets	2.9	2.6	0.0	3.2	2.5	2.8	2.1	2.6	1.8	2.8	private forest
Ida-Viru	riigimets	3.0	1.4	0.5	3.1	1.5	2.0	1.2	2.1	1.5	2.4	state forest
	eramets	2.6	1.6	1.0	2.9	1.7	2.1	1.2	2.1	1.7	2.1	private forest
Jõgeva	riigimets	3.1	1.2	0.4	1.8	1.4	1.7	0.9	1.7	1.3	1.8	state forest
	eramets	2.8	1.5	0.9	3.0	1.4	2.0	1.2	2.1	1.5	1.9	private forest
Järva	riigimets	3.6	1.4	0.4	2.5	0.8	2.4	1.3	2.0	1.5	2.5	state forest
	eramets	3.2	1.6	1.4	2.7	1.5	2.4	1.3	2.1	1.6	2.2	private forest
Lääne	riigimets	3.5	2.1	0.7	3.4	2.2	2.9	1.7	2.4	2.0	3.0	state forest
	eramets	3.0	2.3	0.5	3.4	2.3	2.7	1.9	2.2	2.1	2.6	private forest
Lääne- Viru	riigimets	2.9	1.4	0.4	3.5	1.6	1.9	1.2	1.7	1.5	2.2	state forest
	eramets	2.5	1.5	0.4	2.9	1.8	2.3	1.4	2.2	1.7	2.0	private forest
Põlva	riigimets	2.1	0.5	0.7	0.8	0.8	1.2	0.8	1.3	1.4	1.5	state forest
	eramets	2.3	1.3	1.3	2.2	1.4	1.4	0.9	2.0	1.4	1.7	private forest
Pärnu	riigimets	2.8	1.4	0.2	3.6	2.0	1.8	1.1	1.8	1.6	2.1	state forest
	eramets	2.5	1.6	0.6	3.2	2.2	2.1	1.4	2.1	1.6	2.0	private forest
Rapla	riigimets	3.2	1.8	0.8	2.6	1.3	2.3	1.5	1.9	1.7	2.5	state forest
	eramets	3.1	1.9	0.2	3.1	2.1	2.4	1.5	2.1	1.7	2.3	private forest
Saare	riigimets	3.3	2.4	1.6	4.1	2.9	2.8	2.2	2.4	2.3	3.1	state forest
	eramets	3.2	2.6	1.5	3.8	2.9	3.0	2.4	2.5	2.0	3.0	private forest
Tartu	riigimets	2.7	0.8	0.2	1.5	1.0	1.9	1.0	1.7	1.2	1.9	state forest
	eramets	2.1	1.1	0.2	1.9	1.2	1.6	0.9	1.8	1.4	1.5	private forest
Valga	riigimets	1.9	0.7	0.6	1.7	0.8	1.5	0.8	1.4	1.1	1.5	state forest
	eramets	1.9	1.2	0.7	2.3	1.3	1.6	0.9	1.9	1.4	1.5	private forest
Viljandi	riigimets	2.9	0.9	0.4	2.0	1.0	1.6	1.0	1.8	1.3	1.9	state forest
	eramets	2.4	1.4	0.6	2.4	1.6	1.8	1.1	2.0	1.5	1.7	private forest
Võru	riigimets	2.3	0.9	0.4	1.5	0.9	1.8	1.0	2.0	1.5	1.8	state forest
	eramets	2.1	1.2	0.3	2.3	1.5	1.5	0.9	2.0	1.5	1.6	private forest
Kokku	riigimets	2.9	1.3	0.5	3.3	1.6	2.0	1.1	1.9	1.5	2.2	state forest
Total	eramets	2.7	1.6	0.6	3.5	2.2	2.1	1.5	2.2	1.6	2.1	private forest

Allikas: Keskkonnaagentuur, metsaregister

Source: Estonian Environment Agency, forest register



Joonis 1.9.1 Puistute keskmine boniteet

Figure 1.9.1 Average quality class of stands

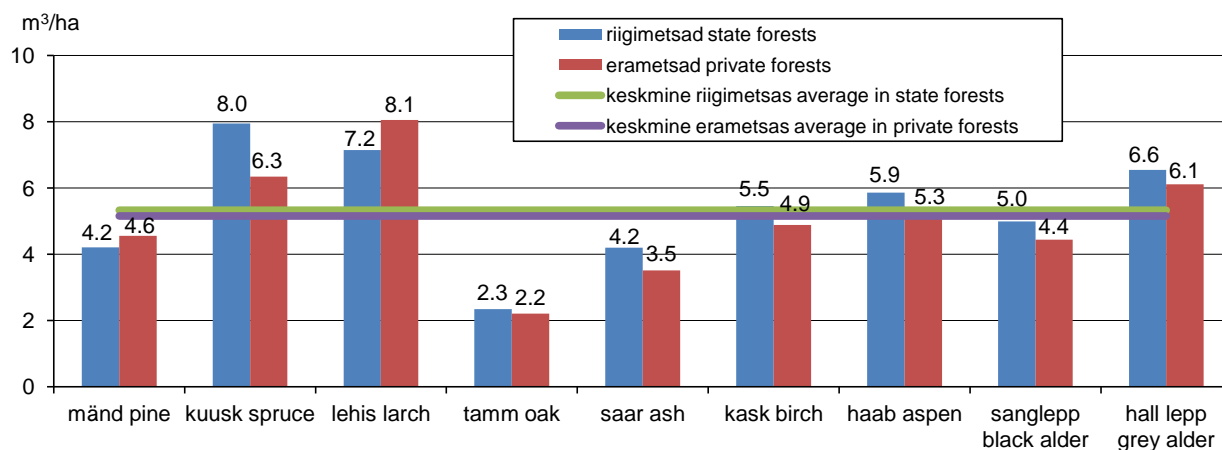
## 1.10 Puistute 1 ha aastane juurdekasv maakonniti valitseva puuliigi järgi

Gross annual increment per hectare of stands by dominant tree species in counties

Maakond County	Omandi- vorm	valitsev puuliik dominant tree species										Ownership category
		mänd pine	kuusk spruce	lehis larch	tamm oak	saar ash	kask birch	haab aspen	sanglepp black alder	hall lepp grey alder	Kokku Total	
		puistute aastane juurdekasv (m <sup>3</sup> /ha)					gross annual increment of stands (m <sup>3</sup> /ha)					
Harju	riigimets	3.8	6.4	5.4	2.2	3.5	4.9	5.4	4.4	6.0	4.5	state forest
	eramets	4.2	5.5	8.3	2.3	3.8	4.4	5.1	4.4	6.0	4.8	private forest
Hiiumaa	riigimets	3.5	3.3	2.3	1.8	2.2	4.3	3.5	3.4	5.2	3.7	state forest
	eramets	4.7	4.6		1.5	3.2	3.8	4.2	4.0	6.3	4.2	private forest
Ida-Viru	riigimets	4.4	7.7	8.9	2.3	4.5	5.4	5.5	4.2	6.6	5.2	state forest
	eramets	4.4	6.1	7.0	1.8	4.2	4.9	5.2	4.1	5.8	5.0	private forest
Jõgeva	riigimets	3.9	8.5	8.9	3.2	4.4	5.7	6.1	5.0	6.8	5.9	state forest
	eramets	4.5	7.0	7.4	2.1	4.5	5.0	5.6	4.6	6.2	5.5	private forest
Järva	riigimets	3.7	7.3	8.7	4.5	6.7	5.0	5.9	5.2	7.5	5.2	state forest
	eramets	4.1	6.2	3.5	4.4	3.3	4.5	5.2	4.3	5.9	5.1	private forest
Lääne	riigimets	4.0	6.5	6.8	2.4	3.6	4.6	4.7	4.6	5.6	4.5	state forest
	eramets	4.5	5.4	7.9	2.0	3.7	4.2	4.4	4.4	5.4	4.5	private forest
Lääne-Viru	riigimets	4.1	7.6	8.5	1.9	4.9	5.6	5.4	4.9	6.7	5.3	state forest
	eramets	4.8	6.1	8.4	2.5	4.3	4.7	5.8	4.5	6.3	5.4	private forest
Põlva	riigimets	5.0	9.9	6.6	7.3	6.2	6.9	7.9	6.0	7.3	6.2	state forest
	eramets	4.8	7.2	3.9	4.1	3.9	6.1	7.1	4.8	6.4	5.6	private forest
Pärnu	riigimets	4.2	8.2	10.5	1.5	3.3	5.7	5.1	5.2	6.0	5.4	state forest
	eramets	4.6	6.9	6.8	2.1	3.6	4.8	5.1	4.7	6.0	5.1	private forest
Rapla	riigimets	3.9	7.2	4.0	3.0	5.9	5.4	5.9	5.2	6.0	5.2	state forest
	eramets	4.0	5.7	11.2	2.2	3.7	4.6	5.1	4.5	6.2	4.8	private forest
Saaremaa	riigimets	4.5	5.9	4.0	1.6	2.7	4.5	4.8	4.7	5.5	4.5	state forest
	eramets	4.6	5.0	7.5	2.2	3.0	4.0	4.4	4.4	5.8	4.4	private forest
Tartu	riigimets	4.3	9.3	7.4	5.6	5.6	5.3	7.1	5.8	7.9	5.8	state forest
	eramets	5.3	8.2	10.0	4.6	4.2	5.7	7.3	5.1	6.5	6.2	private forest
Valga	riigimets	5.1	9.0	5.5	4.3	4.8	6.0	6.8	5.6	7.4	6.2	state forest
	eramets	5.1	7.2	8.6	2.8	4.0	5.6	6.5	4.9	6.6	5.9	private forest
Viljandi	riigimets	4.0	9.0	5.7	3.0	4.5	5.6	5.8	5.1	7.0	5.7	state forest
	eramets	4.4	6.8	6.5	2.3	3.4	5.2	5.7	4.5	6.0	5.5	private forest
Võru	riigimets	4.7	8.9	3.9	6.2	5.1	5.7	6.8	5.1	6.0	6.0	state forest
	eramets	4.9	7.1	8.8	3.9	3.9	5.9	7.2	4.9	6.6	6.0	private forest
Kokku	riigimets	4.2	8.0	7.2	2.3	4.2	5.5	5.9	5.0	6.6	5.3	state forest
Total	eramets	4.6	6.3	8.1	2.2	3.5	4.9	5.3	4.4	6.1	5.2	private forest

Allikas: Keskkonnaagentuur, metsaregister

Source: Estonian Environment Agency, forest register



Joonis 1.10.1 Puistute 1 hektari aastane juurdekasv

Figure 1.10.1 Average gross annual increment per hectare of stands

## 1.11.2 Männikute metsamaa pindala jagunemine maakonniti vanuse järgi

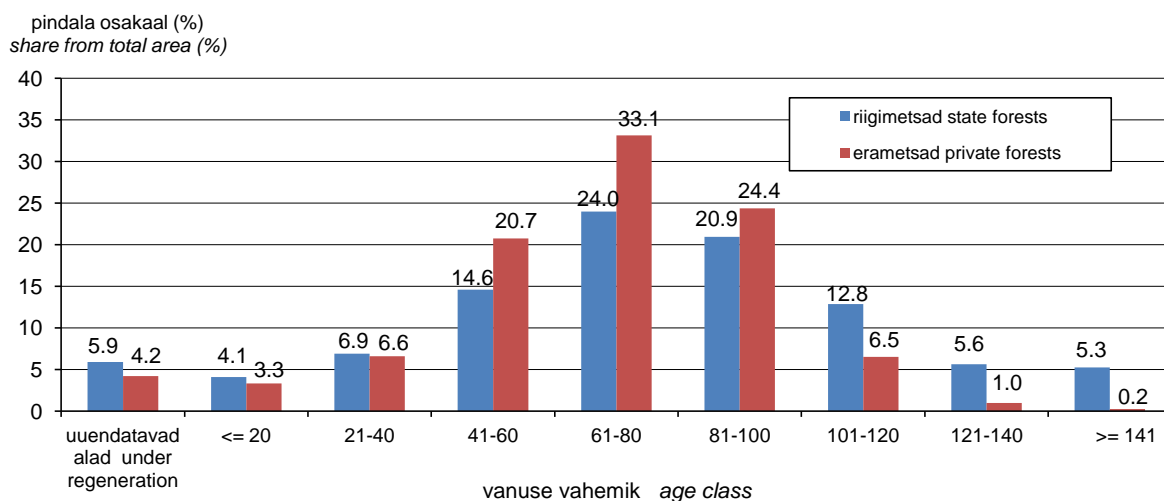
*Distribution of area of pine stands by age classes in counties*

Maakond County	Omandi- vorm	Korraldatud metsamaa pindala (ha) Area with management plans (ha)	vanuse vahemik age class									Ownership category
			uuend* reg.*	=< 20	21-40	41-60	61-80	81-100	101-120	121-140	141 <=	
				pindala (%)				area (%)				
Harju	riigimets	52 379	6.2	2.9	6.1	16.5	22.1	22.4	13.3	6.0	4.7	state forest
	eramets	13 837	3.9	3.9	5.6	15.5	33.0	27.5	8.8	1.3	0.6	private forest
Hiiu	riigimets	15 434	6.6	2.2	7.0	13.9	16.0	14.1	18.3	9.8	12.2	state forest
	eramets	6 761	5.6	1.8	11.7	22.9	29.1	18.7	7.6	2.0	0.5	private forest
Ida-Viru	riigimets	51 474	7.1	5.2	10.4	15.0	24.0	18.0	8.9	6.1	5.5	state forest
	eramets	9 884	3.9	3.4	4.9	16.1	38.3	24.3	6.9	1.6	0.5	private forest
Jõgeva	riigimets	12 952	4.7	3.0	2.6	10.0	28.0	25.5	15.7	5.7	4.7	state forest
	eramets	4 688	1.9	2.8	3.2	19.6	43.3	22.8	4.8	1.4	0.2	private forest
Järva	riigimets	17 817	3.5	1.2	3.0	16.4	28.9	25.9	13.8	4.3	3.0	state forest
	eramets	6 865	3.0	1.1	3.1	16.7	37.1	31.7	6.6	0.9	0.0	private forest
Lääne	riigimets	13 888	5.1	2.0	7.8	15.5	30.6	23.7	8.8	2.8	3.6	state forest
	eramets	7 072	4.0	2.1	8.7	23.3	36.6	16.5	6.9	1.7	0.3	private forest
Lääne- Viru	riigimets	34 932	5.0	2.8	4.5	11.0	21.3	23.0	17.0	7.8	7.7	state forest
	eramets	9 301	4.6	2.5	5.9	16.5	34.8	28.2	6.3	0.8	0.3	private forest
Põlva	riigimets	27 541	7.7	8.8	8.0	14.1	20.3	20.6	11.7	5.0	3.8	state forest
	eramets	16 262	5.4	9.5	5.0	14.7	28.8	27.4	8.1	1.0	0.1	private forest
Pärnu	riigimets	48 407	5.0	3.5	5.9	15.7	25.6	23.1	11.5	4.0	5.7	state forest
	eramets	16 481	3.5	2.2	6.2	24.2	35.1	23.3	4.8	0.5	0.1	private forest
Rapla	riigimets	21 544	5.5	1.8	5.4	14.4	27.4	22.7	14.2	4.4	4.3	state forest
	eramets	13 805	4.3	2.3	3.4	17.2	32.8	29.2	9.2	1.4	0.2	private forest
Saare	riigimets	16 669	5.7	3.8	12.7	20.7	24.4	13.9	8.4	4.2	6.2	state forest
	eramets	36 491	4.7	1.2	12.4	31.0	28.9	16.7	4.3	0.6	0.1	private forest
Tartu	riigimets	15 631	5.1	4.6	5.3	13.2	28.5	19.6	14.4	4.6	4.8	state forest
	eramets	4 452	3.4	3.3	4.9	22.2	36.6	23.3	5.6	0.7	0.1	private forest
Valga	riigimets	25 336	6.2	7.3	8.3	13.9	23.2	18.6	12.2	5.4	4.9	state forest
	eramets	8 814	4.7	5.8	3.4	19.4	34.4	24.5	6.8	0.8	0.2	private forest
Viljandi	riigimets	19 468	4.5	3.2	4.6	13.7	25.5	20.6	15.4	7.3	5.2	state forest
	eramets	9 372	3.5	1.7	1.9	15.9	39.1	29.9	7.0	0.8	0.2	private forest
Võru	riigimets	23 478	7.6	6.5	8.5	12.4	21.2	20.6	14.6	6.2	2.5	state forest
	eramets	13 673	3.5	6.0	4.2	15.1	31.5	31.9	6.8	1.0	0.0	private forest
Kokku	riigimets	396 947	5.9	4.1	6.9	14.6	24.0	20.9	12.8	5.6	5.3	state forest
Total	eramets	177 757	4.2	3.3	6.6	20.7	33.1	24.4	6.5	1.0	0.2	private forest

\*Uuendatav ala Under regeneration

Allikas: Keskkonnaagentuur, metsaregister

Source: Estonian Environment Agency, forest register



Joonis 1.11.2.1 Männikute metsamaa pindala jagunemine vanuse järgi

Figure 1.11.2.1 Distribution of area of pine stands by age classes



## 1.12.2 Kuusikute metsamaa pindala jagunemine maakonniti vanuse järgi

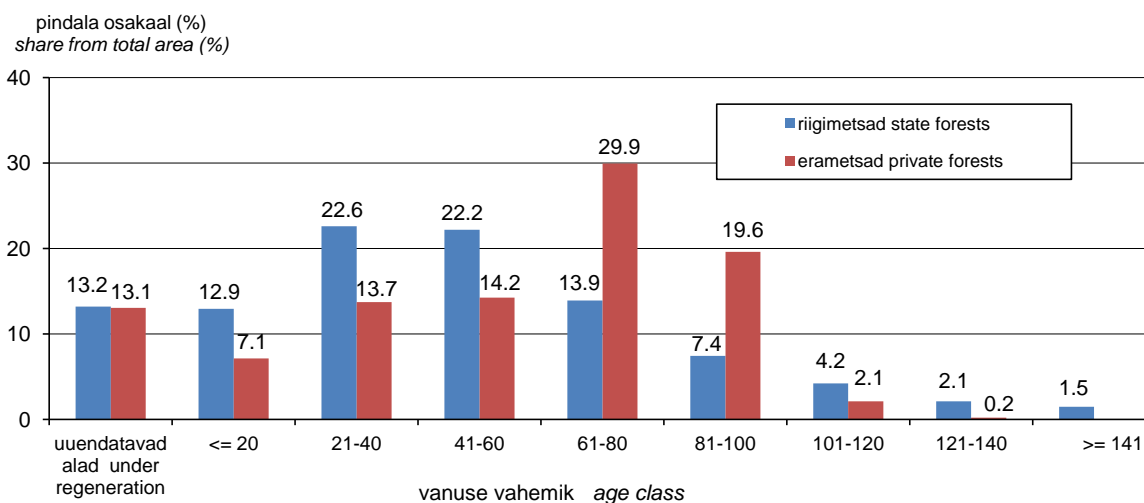
*Distribution of area of spruce stands by age classes in counties*

Maakond County	Omandi- vorm	Korraldatud metsamaa pindala (ha) Area with management plans (ha)	uuend* reg.*	vanuse vahemik age class								Ownership category
				=< 20	21-40	41-60	61-80	81-100	101-120	121-140	141 <=	
Harju	riigimets	16 828	9.1	5.7	16.8	22.3	19.3	13.9	6.8	4.1	1.9	state forest
	eramets	13 067	7.1	3.0	9.0	15.6	38.7	24.1	2.3	0.3	0.0	private forest
Hiiumaa	riigimets	1 765	13.9	5.5	7.6	7.8	4.1	5.3	12.1	18.8	25.0	state forest
	eramets	2 238	7.2	1.9	3.1	9.5	30.8	34.8	11.0	1.8	0.0	private forest
Ida-Virumaa	riigimets	15 781	17.9	13.4	21.0	19.2	11.1	7.9	4.7	2.4	2.6	state forest
	eramets	5 222	15.2	6.0	13.1	9.4	31.8	21.8	2.2	0.5	0.2	private forest
Jõgevamaa	riigimets	14 577	12.2	13.0	24.4	24.5	13.8	7.3	3.1	1.3	0.4	state forest
	eramets	7 591	10.4	6.0	17.2	18.6	32.2	14.6	0.8	0.1	0.0	private forest
Järva maakond	riigimets	15 681	12.9	9.6	19.7	21.8	20.9	10.0	3.8	0.8	0.7	state forest
	eramets	9 748	13.3	5.0	12.1	13.0	36.9	18.3	1.4	0.1	0.0	private forest
Lääne maakond	riigimets	3 418	9.6	5.7	21.0	24.2	25.1	10.6	3.1	0.8	0.0	state forest
	eramets	2 879	8.6	4.6	11.4	14.8	36.0	19.7	3.9	0.8	0.3	private forest
Lääne-Virumaa	riigimets	22 310	15.3	12.6	21.5	16.4	13.5	7.4	7.5	3.6	2.2	state forest
	eramets	16 190	18.1	6.1	12.0	10.1	29.1	22.5	1.9	0.2	0.0	private forest
Põlvamaa	riigimets	9 469	15.2	15.9	23.8	24.6	12.7	3.9	2.7	1.0	0.3	state forest
	eramets	4 975	13.9	10.5	15.7	18.4	20.1	17.0	4.2	0.3	0.0	private forest
Pärnumaa	riigimets	24 761	13.7	17.7	24.5	25.5	8.5	4.4	2.4	1.5	1.9	state forest
	eramets	8 397	11.6	13.1	23.9	14.7	20.4	14.8	1.4	0.1	0.0	private forest
Rapla maakond	riigimets	12 975	12.1	8.1	23.8	22.8	18.8	9.1	4.0	1.1	0.4	state forest
	eramets	13 467	11.2	5.9	12.9	11.7	34.5	21.4	2.3	0.2	0.0	private forest
Saaremaa	riigimets	1 674	13.3	5.0	17.9	12.3	17.0	21.1	7.2	5.1	1.2	state forest
	eramets	3 728	10.4	1.9	3.1	12.5	43.7	26.3	2.1	0.1	0.0	private forest
Tartumaa	riigimets	11 260	13.3	13.4	25.2	25.6	12.2	5.0	2.8	1.6	0.9	state forest
	eramets	5 068	16.3	7.2	18.6	21.4	23.4	11.7	1.4	0.0	0.0	private forest
Valgamaa	riigimets	11 493	11.3	14.7	25.5	22.1	13.9	6.3	3.5	1.8	0.8	state forest
	eramets	8 343	16.2	10.3	14.2	17.6	22.3	17.5	1.8	0.1	0.1	private forest
Viljandi maakond	riigimets	15 859	13.1	21.1	26.4	22.0	9.6	3.9	2.2	1.0	0.7	state forest
	eramets	11 602	17.3	11.5	16.7	14.4	24.1	14.6	1.2	0.2	0.0	private forest
Võrumaa	riigimets	11 750	11.7	11.8	23.1	25.3	13.7	7.2	4.0	1.9	1.4	state forest
	eramets	10 123	11.1	9.1	14.2	15.4	26.5	21.4	2.3	0.1	0.0	private forest
Kokku	riigimets	189 599	13.2	12.9	22.6	22.2	13.9	7.4	4.2	2.1	1.5	state forest
	eramets	122 638	13.1	7.1	13.7	14.2	29.9	19.6	2.1	0.2	0.0	private forest

\*Uuendatav ala Under regeneration

Allikas: Keskkonnaagentuur, metsaregister

Source: Estonian Environment Agency, forest register



Joonis 1.12.2.1 Kuusikute metsamaa pindala jagunemine vanuse järgi

Figure 1.12.2.1 Distribution of area of spruce stands by age classes

### 1.13.2 Kaasikute metsamaa pindala jagunemine maakonniti vanuse järgi

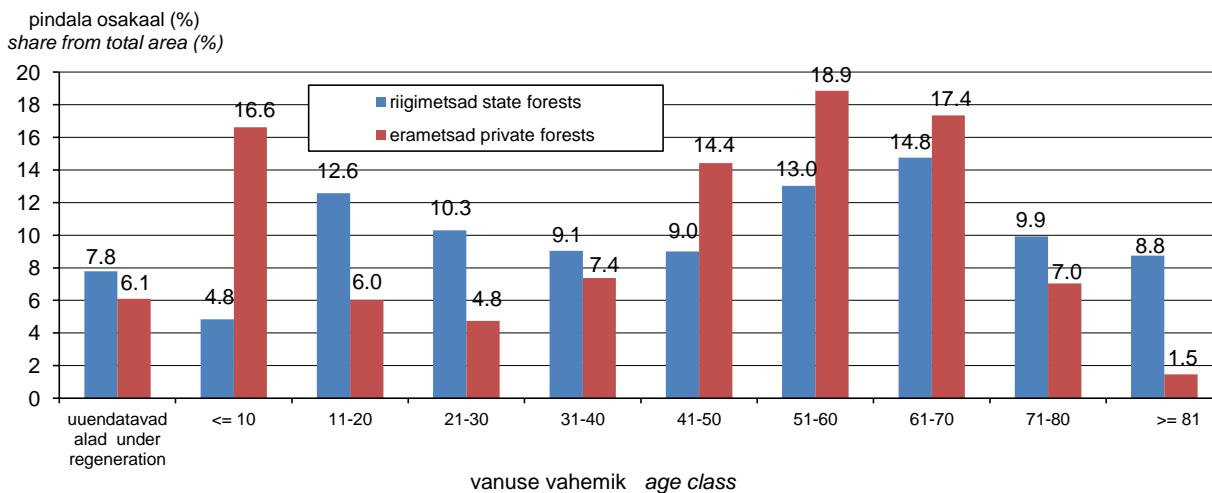
*Distribution of area of birch stands by age classes in counties*

Maakond County	Omandi- vorm	Korraldatud metsamaa pindala (ha) Area with management plans (ha)	vanuse vahemik age class										Ownership category
			uuend* reg.*	=< 10	11-20	21-30	31-40	41-50	51-60	61-70	71-80	81 <=	
Harju	riigimets	19 704	8.4	2.7	9.3	9.7	10.6	11.8	13.2	16.5	9.4	8.2	state forest
	eramets	18 193	5.0	8.0	4.5	6.6	9.5	15.3	18.1	23.0	8.2	1.8	private forest
Hiiu	riigimets	6 112	7.2	3.5	17.6	11.8	3.6	4.7	10.5	14.2	13.3	13.8	state forest
	eramets	11 443	8.2	13.8	2.3	2.2	5.1	10.2	14.0	22.9	17.3	3.9	private forest
Ida-Viru	riigimets	35 740	8.7	6.2	13.5	9.9	7.8	8.4	11.8	14.3	10.4	9.2	state forest
	eramets	17 703	6.6	20.7	5.2	4.5	6.1	12.3	17.4	18.5	7.4	1.3	private forest
Jõgeva	riigimets	25 543	9.1	5.1	12.2	9.1	7.8	8.0	15.2	15.2	10.2	8.1	state forest
	eramets	21 444	5.2	16.8	3.8	4.0	7.4	16.8	23.3	16.4	5.4	0.9	private forest
Järva	riigimets	13 394	8.2	3.7	12.8	10.4	11.4	10.2	12.4	13.1	9.4	8.4	state forest
	eramets	15 694	6.4	13.1	4.4	4.8	6.2	13.2	18.5	22.0	9.9	1.4	private forest
Lääne	riigimets	9 828	5.3	2.2	6.9	10.1	13.9	15.8	15.0	17.1	9.5	4.2	state forest
	eramets	12 844	5.9	5.5	5.4	6.1	7.2	13.0	19.1	25.9	10.2	1.8	private forest
Lääne- Viru	riigimets	19 754	6.7	9.4	16.0	9.4	9.3	7.9	10.6	11.3	8.2	11.1	state forest
	eramets	18 816	9.0	19.3	4.5	4.6	6.7	12.3	17.5	17.7	7.0	1.4	private forest
Põlva	riigimets	8 091	6.0	6.3	17.9	14.4	9.4	6.6	11.5	13.5	7.6	7.0	state forest
	eramets	15 572	5.6	27.6	13.0	5.1	5.9	9.9	16.7	12.1	3.1	1.0	private forest
Pärnu	riigimets	51 887	8.4	3.4	11.6	11.4	9.8	8.5	14.5	14.5	9.6	8.3	state forest
	eramets	32 319	4.5	20.6	6.0	4.7	7.7	14.8	16.6	15.6	8.0	1.5	private forest
Rapla	riigimets	16 789	8.3	3.3	10.2	13.5	11.1	10.6	11.6	15.2	9.0	7.3	state forest
	eramets	24 080	6.0	14.1	4.8	5.7	7.9	14.2	16.3	18.9	9.3	2.8	private forest
Saare	riigimets	4 102	6.4	1.4	4.8	8.0	8.5	11.3	18.2	17.8	11.0	12.5	state forest
	eramets	14 397	6.7	2.8	3.3	4.9	9.4	17.4	24.7	23.4	6.7	0.7	private forest
Tartu	riigimets	29 812	6.1	5.0	15.0	7.3	7.1	9.7	14.5	16.6	10.3	8.5	state forest
	eramets	15 121	6.1	16.2	8.0	4.5	7.6	18.9	23.5	11.6	2.9	0.7	private forest
Valga	riigimets	10 692	6.6	5.4	13.3	11.1	9.7	8.6	10.0	13.9	11.1	10.4	state forest
	eramets	17 291	7.1	17.3	7.5	4.3	7.7	16.1	20.0	14.1	4.6	1.4	private forest
Viljandi	riigimets	19 192	8.6	5.3	12.2	10.2	7.7	7.6	12.3	15.6	10.7	9.8	state forest
	eramets	33 237	6.0	21.3	7.1	3.9	7.3	15.0	19.1	14.2	5.4	0.9	private forest
Võru	riigimets	8 668	7.0	8.0	12.5	11.7	8.7	6.5	11.2	13.5	12.5	8.4	state forest
	eramets	17 298	5.6	19.9	9.8	5.5	7.8	14.7	19.3	12.0	4.1	1.5	private forest
Kokku	riigimets	279 306	7.8	4.8	12.6	10.3	9.1	9.0	13.0	14.8	9.9	8.8	state forest
Total	eramets	285 450	6.1	16.6	6.0	4.8	7.4	14.4	18.9	17.4	7.0	1.5	private forest

\*Uuendatav ala Under regeneration

Allikas: Keskkonnaagentuur, metsaregister

Source: Estonian Environment Agency, forest register



Joonis 1.13.2.1 Kaasikute metsamaa pindala jagunemine vanuse järgi

Figure 1.13.2.1 Distribution of area of birch stands by age classes

### 1.14.2 Haavikute metsamaa pindala jagunemine maakonniti vanuse järgi

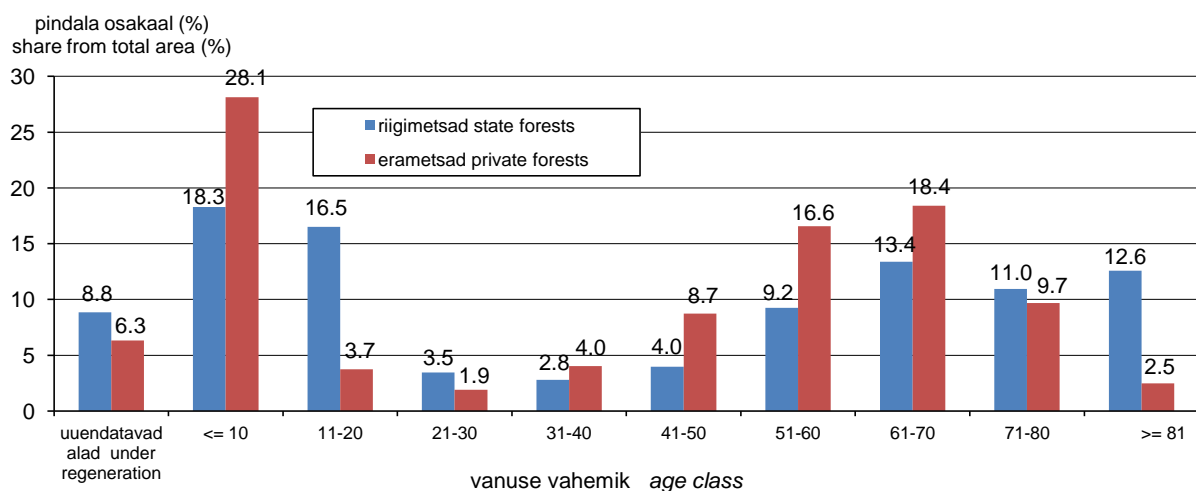
*Distribution of area of aspen stands by age classes in counties*

Maakond County	Omandi- vorm	Korraldatud metsamaa pindala (ha) Area with management plans (ha)	vanuse vahemik age class										Ownership category
			uuend* reg.*	<= 10	11-20	21-30	31-40	41-50	51-60	61-70	71-80	81 <=	
			pindala (%)					area (%)					
Harju	riigimets	1 119	10.4	7.7	9.8	1.8	4.8	7.5	17.7	19.0	12.8	8.4	state forest
	eramets	1 929	5.9	19.6	2.2	1.0	5.0	13.9	22.3	23.2	5.6	1.4	private forest
Hiiu	riigimets	97	11.0	2.4	6.2	1.0		0.8	6.6	17.0	24.4	30.6	state forest
	eramets	757	5.7	6.7	0.7	1.0	3.4	9.4	17.2	31.0	21.7	3.3	private forest
Ida-Viru	riigimets	3 283	10.5	15.0	14.1	2.7	1.4	3.8	12.7	12.4	12.3	15.0	state forest
	eramets	2 437	7.3	33.9	2.1	1.2	2.6	5.2	14.3	18.6	9.7	5.0	private forest
Jõgeva	riigimets	4 683	9.3	21.9	16.7	3.9	2.3	1.9	9.7	13.6	10.1	10.7	state forest
	eramets	3 007	5.9	40.9	2.3	1.7	1.8	5.7	17.5	15.6	6.7	1.9	private forest
Järva	riigimets	1 278	10.9	16.1	15.5	4.0	4.5	4.3	9.7	14.2	10.4	10.4	state forest
	eramets	2 527	7.3	29.4	4.8	1.0	1.5	4.4	13.5	19.6	15.9	2.6	private forest
Lääne	riigimets	1 201	2.8	3.8	6.5	1.0	2.0	10.5	16.3	30.0	17.1	10.0	state forest
	eramets	2 416	3.9	7.8	1.5	0.5	3.1	9.8	24.3	33.2	13.3	2.7	private forest
Lääne- Viru	riigimets	2 878	8.6	21.1	15.2	1.6	2.2	2.9	7.0	14.1	11.6	15.7	state forest
	eramets	3 692	11.0	36.1	5.7	1.9	3.3	7.9	13.9	11.5	7.3	1.5	private forest
Põlva	riigimets	1 563	6.8	26.3	29.1	5.1	5.6	1.5	4.2	6.3	4.8	10.2	state forest
	eramets	1 698	8.1	44.9	7.6	2.3	3.2	7.9	11.2	7.9	5.0	1.9	private forest
Pärnu	riigimets	2 812	10.1	11.4	12.0	1.7	1.0	1.8	10.1	14.0	14.4	23.7	state forest
	eramets	4 877	3.4	34.1	3.2	1.3	2.5	7.1	14.8	19.7	11.2	2.8	private forest
Rapla	riigimets	1 467	10.0	11.1	12.6	6.2	2.3	8.8	11.8	17.6	10.0	9.6	state forest
	eramets	3 129	6.5	26.9	2.5	1.9	3.0	7.6	14.9	18.9	13.5	4.4	private forest
Saare	riigimets	957	3.4	0.0	2.0	2.7	5.1	15.0	15.7	28.6	18.2	9.3	state forest
	eramets	7 489	4.8	1.4	1.0	3.0	9.1	15.0	26.4	27.1	10.7	1.6	private forest
Tartu	riigimets	4 248	9.6	28.3	25.5	4.0	3.5	3.5	5.3	7.5	6.2	6.7	state forest
	eramets	2 328	7.0	44.4	7.1	2.1	4.4	8.5	13.0	7.9	4.5	1.2	private forest
Valga	riigimets	1 705	7.2	19.1	21.2	5.1	4.0	2.5	5.7	12.6	10.0	12.7	state forest
	eramets	2 335	8.6	35.2	4.5	3.3	4.2	7.7	12.4	13.0	7.8	3.4	private forest
Viljandi	riigimets	2 769	8.9	21.1	15.5	2.7	1.3	4.3	6.2	11.2	13.2	15.7	state forest
	eramets	4 476	6.5	44.5	5.8	1.4	1.7	4.8	9.7	13.8	9.1	2.9	private forest
Võru	riigimets	1 609	7.9	20.4	17.7	7.3	4.8	2.4	10.1	9.0	9.4	10.9	state forest
	eramets	2 578	6.6	34.5	7.7	3.5	5.3	11.0	12.5	10.3	6.5	2.3	private forest
Kokku	riigimets	31 669	8.8	18.3	16.5	3.5	2.8	4.0	9.2	13.4	11.0	12.6	state forest
<b>Total</b>	<b>eramets</b>	<b>45 676</b>	<b>6.3</b>	<b>28.1</b>	<b>3.7</b>	<b>1.9</b>	<b>4.0</b>	<b>8.7</b>	<b>16.6</b>	<b>18.4</b>	<b>9.7</b>	<b>2.5</b>	<b>private forest</b>

\*Uuendatav ala *Under regeneration*

Allikas: Keskkonnaagentuur, metsaregister

Source: Estonian Environment Agency, forest register



Joonis 1.14.2.1 Haavikute metsamaa pindala jagunemine vanuse järgi

Figure 1.14.2.1 Distribution of area of aspen stands by age classes

## 1.15 Hall-lepikute metsamaa pindala jagunemine maakonniti vanuse järgi

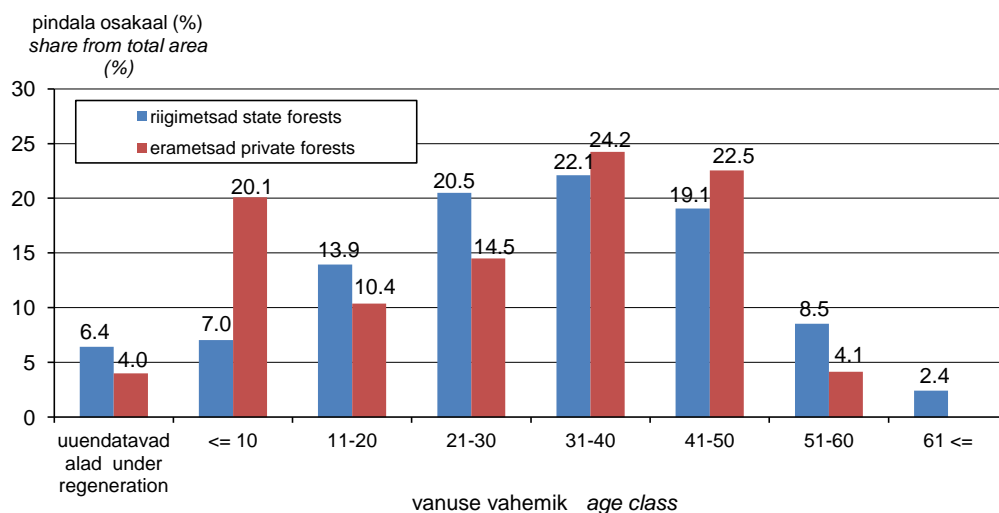
*Distribution of area of grey alder stands by age classes in counties*

Maakond County	Omandi- vorm	Korraldatud metsamaa pindala (ha) Area with management plans (ha)	vanuse vahemik age class								Ownership category
			uuend* reg.*	<= 10	11-20	21-30	31-40	41-50	51-60	61 <=	
Harju	riigimets	1 305	7.5	4.5	13.0	14.3	23.3	23.8	8.9	4.8	state forest
	eramets	5 368	3.4	12.9	10.8	18.2	29.3	22.6	2.7	0.1	private forest
Hiiumaa	riigimets	2						100.0			state forest
	eramets	43	7.2	3.0	17.7	17.2	28.8	18.1	7.9	0.0	private forest
Ida-Viru	riigimets	1 109	6.8	7.1	16.2	24.3	17.2	13.3	10.5	4.6	state forest
	eramets	4 322	3.9	20.5	11.7	12.0	21.4	25.3	5.1	0.0	private forest
Jõgeva	riigimets	1 590	8.4	10.6	13.1	18.8	19.5	19.1	9.3	1.2	state forest
	eramets	8 535	3.3	26.0	9.2	12.5	20.6	23.6	4.8	0.0	private forest
Järva	riigimets	940	6.9	8.8	17.3	26.2	21.5	15.1	3.8	0.4	state forest
	eramets	6 846	5.7	26.2	10.7	11.2	19.1	22.9	4.2	0.1	private forest
Lääne	riigimets	884	2.6	1.4	7.1	20.5	35.2	29.1	4.0	0.1	state forest
	eramets	4 351	2.2	11.8	8.6	15.5	31.8	26.9	3.3	0.1	private forest
Lääne-Viru	riigimets	1 419	7.0	9.1	15.5	17.7	23.4	12.9	10.5	4.0	state forest
	eramets	9 276	6.0	24.1	11.7	15.3	21.2	18.7	2.9	0.1	private forest
Põlva	riigimets	162	8.7	2.8	9.8	30.7	18.8	23.8	5.4	0.0	state forest
	eramets	1 625	3.8	15.0	13.7	17.2	24.2	17.9	7.1	1.2	private forest
Pärnu	riigimets	1 224	3.9	5.3	10.6	17.4	21.7	25.4	12.6	3.2	state forest
	eramets	10 100	2.5	19.5	10.2	15.6	25.8	22.3	3.8	0.2	private forest
Rapla	riigimets	790	5.5	2.6	21.1	16.7	17.3	23.6	10.9	2.3	state forest
	eramets	6 608	3.9	19.8	9.6	16.3	26.1	21.3	3.1	0.1	private forest
Saare	riigimets	73	1.9		10.3	25.2	23.2	34.5	4.8	0.0	state forest
	eramets	614	2.2	3.7	9.5	25.2	34.5	20.6	4.4	0.0	private forest
Tartu	riigimets	699	6.6	12.2	16.2	33.3	15.6	11.4	4.2	0.6	state forest
	eramets	3 723	4.7	20.4	9.7	14.9	25.9	21.3	3.0	0.2	private forest
Valga	riigimets	776	7.5	7.7	12.0	21.7	31.3	14.8	4.0	1.0	state forest
	eramets	5 677	3.7	11.8	9.7	17.2	32.2	22.2	3.2	0.1	private forest
Viljandi	riigimets	822	7.0	9.3	16.4	22.5	18.4	13.7	9.5	3.2	state forest
	eramets	16 160	4.5	24.0	10.3	11.4	19.5	23.7	6.3	0.3	private forest
Võru	riigimets	338	5.6	3.9	7.8	15.9	23.9	29.1	12.5	1.4	state forest
	eramets	4 592	3.0	9.9	11.4	18.3	32.1	22.4	2.8	0.2	private forest
Kokku	riigimets	12 132	6.4	7.0	13.9	20.5	22.1	19.1	8.5	2.4	state forest
Total	eramets	87 840	4.0	20.1	10.4	14.5	24.2	22.5	4.1	0.2	private forest

\*Uuendatav ala Under regeneration

Allikas: Keskkonnaagentuur, metsaregister

Source: Estonian Environment Agency, forest register



Joonis 1.15.1 Hall-lepikute metsamaa pindala jagunemine vanuse järgi

Figure 1.15.1 Distribution of area of grey alder stands by age classes